



# Supporting Pupils with Medical Conditions

Policy updated by:	Z Omar-Davies
Reviewed by staff:	July 2023
Review due:	Oct 2025
Agreed by Headteacher:	N Anderson
Agreed by Management Committee:	13.07.23



## Introduction

The Leicester City Primary PRU is an inclusive community that welcomes and supports pupils with medical conditions. We understand that the medical conditions impact on children's ability to learn, their confidence, self esteem and their ability to care for themselves. The school provides all pupils with any medical condition the same opportunities as others at school.

The PRU recognises that long term absences due to health problems affect children's educational attainment, impact on their ability to integrate with their peers and this has an effect on their general wellbeing and emotional health. Equally we know that short term and frequent absences, including those for appointments connected with a pupil's medical condition, also need to be effectively managed and appropriate support put in place to limit the impact on the child's educational attainment and emotional and general wellbeing.

In addition to the educational impacts, there are social and emotional implications associated with medical conditions. Children may be self-conscious about their condition and some may be bullied or develop emotional disorders such as anxiety or depression connected with their medical condition.

We also know that parents/carers of children with medical conditions are often concerned that their child's health may deteriorate when they attend school. This may be due to worries about children with conditions that affect their immune system contracting infections and viruses as a result of being around other children leading to absence or deterioration in their condition. It may also be because children with complex medical conditions may require on-going support, medication or care while at school to help them manage their condition and keep them well. Other children may require emergency care if their condition unpredictably or rapidly deteriorates while they are in school. We therefore recognise that it is vital that parents have confidence in the school's ability to provide effective support for their child and that their child feels safe.

We understand that certain medical conditions are debilitating and potentially life threatening, particularly if poorly managed or misunderstood. Staff are made aware of the medical conditions that affect pupils at the PRU, and staff receive training on the impact that medical conditions can have on pupils.

All staff at the PRU have a shared duty of care to children and young people in the event of an emergency, and we aim to make sure that all staff know what to do should an emergency arise.

**The named person with responsibility for implementing this policy is Nicola Anderson (Headteacher).**



## Aims

This policy aims to ensure that:

- All pupils with medical conditions, in terms of physical and mental health are properly supported in school so they can play a full and active role in school life, remain healthy and achieve the highest standards;
- We focus on the needs of individual children with medical conditions so they can access and enjoy the same opportunities at school as other children;
- Parents/carers feel confident that the school will provide effective support for the child's medical condition and that all pupils feel safe;
- We seek, listen to and act appropriately on the views of parents/carers and pupils with medical conditions;
- Effective relationships are established with appropriate health services in order to seek and fully consider any advice they offer in terms of supporting children with medical conditions;
- Staff are properly trained to provide the support that pupils in their care need.

The Management Committee will implement this policy by:

- Making sure sufficient staff are suitably trained;
- Making staff aware of pupil's condition, where appropriate;
- Making sure there are cover arrangements to ensure someone is always available to support pupils with medical conditions;
- Providing supply teachers with appropriate information about the policy and relevant pupils;
- Developing and monitoring individual healthcare plans (IHPs).

This policy meets the requirements under [Section 100 of the Children and Families Act 2014](#), which places a duty on governing boards to make arrangements for supporting pupils at their school with medical conditions.

It is also based on the Department for Education's statutory guidance: [Supporting pupils at school with medical conditions](#).

## Roles & Responsibilities

### **The Management Committee**

The Management Committee has ultimate responsibility to make arrangements to support pupils with medical conditions. The Management Committee will ensure that sufficient staff have received suitable training and are competent before they are responsible for supporting children with medical conditions.

### **The Headteacher**



The Headteacher will:

- Make sure all staff are aware of this policy and understand their role in its implementation;
- Ensure that there is a sufficient number of trained staff available to implement this policy and deliver against all individual healthcare plans (IHPs), including contingency and emergency situations;
- Take overall responsibility for the development of IHPs;
- Make sure that school staff are appropriately insured and aware that they are insured to support pupils in this way;
- Contact the school nursing service in the case of any pupil who has a medication condition that may require support at school, but who has not yet been brought to the attention of the school nurse;
- Ensure that systems are in place for obtaining information about a child's medical needs and that this information is kept up to date.

## **Staff**

Supporting pupils with medical conditions during school hours is not the sole responsibility of one person. Any member of staff may be asked to provide support to pupils with medical conditions, although they will not be required to do so. This includes the administration of medicines.

Those staff who take on the responsibility to support pupils with medical conditions will receive sufficient and suitable training, and will achieve the necessary level of competency before doing so.

Teachers will take into account the needs of pupils with medical conditions that they teach. All staff will know what to do and respond accordingly when they become aware that a pupil with a medical condition needs help.

## **Parents/carers**

Parents/carers are expected to:

- Provide the school with sufficient and up-to-date information about their child's medical needs;
- Be involved in the development and review of their child's IHP and may be involved in its drafting;
- Carry out any action that they have agreed to as part of the implementation of the IHP, eg provide medicines and equipment.

## **Pupils**

Pupils with medical conditions will often be best placed to provide information about how their medical condition affects them. Pupils should be fully involved in discussions about their medical support needs and contribute as much as possible to the development of their IHPs. They are also expected to comply with their IHPs.



## **School nurses and other healthcare professionals**

Our school nursing service will notify the school when a pupil has been identified as having a medical condition that will require support in school. This will be before the pupil starts school, wherever possible.

Healthcare professionals, such as GPs and paediatricians, will liaise with the school nurses and notify them of any pupils identified as having a medical condition.

## **Equal Opportunities**

The Leicester Primary PRU is clear about the need to actively support pupils with medical conditions to participate in school trips and visits, or in sporting activities, and not prevent them from doing so.

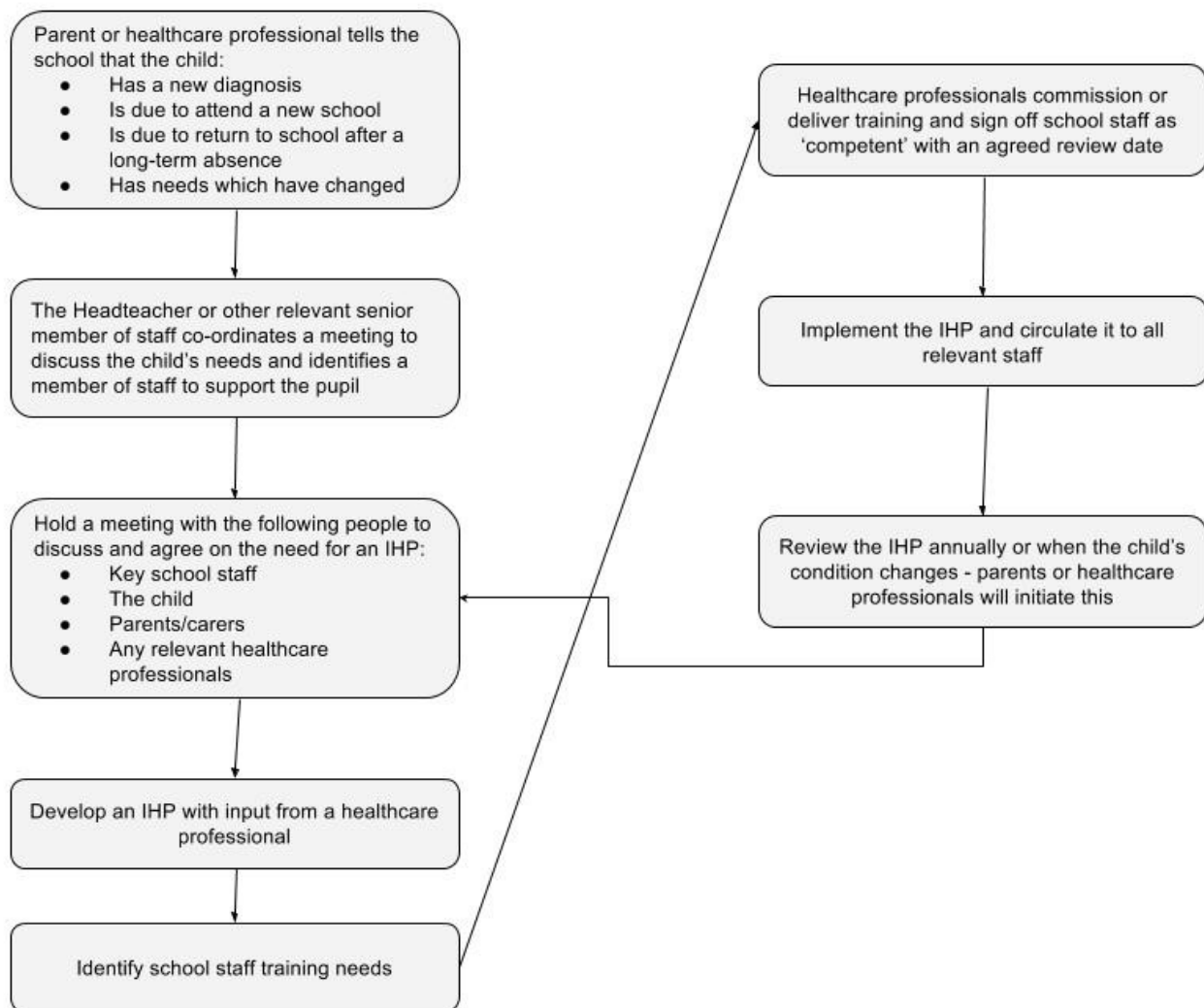
The school will consider what reasonable adjustments need to be made to enable these pupils to participate fully and safely on school trips, visits and sporting activities.

Risk assessments will be carried out so that planning arrangements take account of any steps needed to ensure that pupils with medical conditions are included. In doing so, pupils, their parents/carers and any relevant healthcare professionals will be consulted.

## **Being notified that a child has a medical condition**

When the school is notified that a pupil has a medical condition, the process outlined below will be followed to decide whether the pupil requires an IHP.

The Primary PRU will make every effort to ensure that arrangements are put into place within 2 weeks, or as soon as practicable for pupils who are new to our school.



## Individual Healthcare Plans

The Headteacher has overall responsibility for the development of IHPs for pupils with medical conditions. This has been delegated to **Nicola Anderson (Headteacher)**.

Plans will be reviewed at least annually, or earlier if there is evidence that the pupil's needs have changed. Plans will be developed with the pupil's best interests in mind and will set out:

- what needs to be done
- when
- by whom



Not all pupils with a medical condition will require an IHP. It will be agreed with a healthcare professional and the parents/carers when an IHP would be inappropriate or disproportionate. This will be based on evidence. If there is not a consensus, the Headteacher will make the final decision.

Plans will be drawn up in partnership with the school, parents/carers and a relevant healthcare professional, such as the school nurse, specialist or paediatrician, who can best advise on the pupil's specific needs. The pupil will be involved wherever appropriate.

IHPs will be linked to, or become part of, any statement of special educational needs (SEN) or education, health and care (EHC) plan. If a pupil has SEN but does not have a statement or EHC plan, the SEN will be mentioned in the IHP.

The level of detail in the plan will depend on the complexity of the child's condition and how much support is needed. The Management Committee and the Headteacher will consider the following when deciding what information to record on IHPs:

- The medical condition, its triggers, signs, symptoms and treatments;
- The pupil's resulting needs, including medication (dose, side effects and storage) and other treatments, time, facilities, equipment, testing, access to food and drink where this is used to manage their condition, dietary requirements and environmental issues, eg crowded corridors, travel time between lessons;
- Specific support for the pupil's educational, social and emotional needs, For example, how absences will be managed, requirements for extra time to complete exams, use of rest periods or additional support in catching up with lessons, counselling sessions;
- The level of support needed, including in emergencies. If a pupil is self-managing their medication, this will be clearly stated with appropriate arrangements for monitoring;
- Who will provide this support, their training needs, expectations of their role and confirmation of proficiency to provide support for the pupil's medication condition from a healthcare professional, and cover arrangements for when they are unavailable;
- Who in the school needs to be aware of the pupil's condition and the support required;
- Arrangements for written permission from parents and the Headteacher for medication to be administered by a member of staff, or self-administered by the pupil during school hours;
- Separate arrangements or procedures required for school trips or other school activities outside of the normal school timetable that will ensure the pupil can participate, eg risk assessments;
- Where confidentiality issues are raised by the parent/pupil, the designated individuals to be entrusted with information about the pupil's condition;
- What to do in an emergency, including who to contact, and contingency arrangements.



## Managing medicines

Prescription (and non-prescription) medicines will only be administered at school:

- Where it would be detrimental to the pupil's health or school attendance not to do so **and**
- Where we have parents' written consent.

**The only exception to this is where the medicine has been prescribed to the pupil without the knowledge of the parents. Every effort will be made to encourage the pupil to involve their parent, while respecting their confidentiality.**

Pupils under 16 will not be given medicine containing aspirin unless prescribed by a doctor.

Anyone giving a pupil any medication (for example, for pain relief) will first check maximum dosages and when the previous dosage was taken. Parents will always be informed.

The Primary PRU will only accept prescribed medicines that are:

- In date
- Labelled
- Provided in the original container, as dispensed by the pharmacist, and include instructions for administration, dosage and storage.

The school will accept insulin that is inside an insulin pen or pump rather than its original container, but it must be in date.

All medicines will be stored safely. Pupils will be informed about where their medicines are at all times and be able to access them immediately. Medicines and devices such as asthma inhalers, blood glucose testing meters and adrenaline pens will always be readily available to pupils.

Medicines will be returned to parents to arrange for safe disposal when no longer required.

### **Controlled drugs**

Controlled drugs are prescription medicines that are controlled under the Misuse of Drugs Regulations 2001 and subsequent amendments, such as morphine or methadone.

A pupil who has been prescribed a controlled drug may have it in their possession if they are competent to do so, but they must not pass it to another pupil to use. All other controlled drugs are kept in a secure cupboard in the school office and only named staff have access.





Controlled drugs will be easily accessible in an emergency and a record of any doses used and the amount held will be kept.

### **Pupils managing their own needs**

Pupils who are competent will be encouraged to take responsibility for managing their own medicines and procedures. This will be discussed with parents and it will be reflected in their IHPs.

Staff will not force a pupil to take medicine or carry out a necessary procedure if they refuse, but will follow the procedure agreed in the IHP and inform parents so that an alternative option can be considered, if necessary.

### **Unacceptable Practice**

School staff should use their discretion and judge each case individually with reference to the pupil's IHP, but it is generally not acceptable to:

- Prevent pupils from easily accessing their inhalers and medication, and administering their medication when and where necessary;
- Assume that every pupil with the same condition requires the same treatment;
- Ignore the views of the pupil or their parents;
- Ignore medical evidence or opinion (although this may be challenged);
- Send children with medical conditions home frequently for reasons associated with their medical condition or prevent them from staying for normal school activities, including lunch, unless this is specified in their IHPs;
- If the pupil becomes ill, send them to the school office or medical room unaccompanied or with someone unsuitable;
- Penalise pupils for their attendance record if their absences are related to their medical condition, eg hospital appointments;
- Prevent pupils from eating, drinking, taking toilet or other breaks whenever they need to in order to manage their medical condition effectively;
- Require parents, or otherwise make them feel obliged, to attend school to administer medication or provide medical support to their pupil, including with toileting issues. No parent should have to give up work because the school is failing to support their child's medical needs;
- Prevent pupils from participating, or create unnecessary barriers to pupils participating in any aspect of school life, including school trips, eg by requiring parents to accompany their child;
- Administer, or ask pupils to administer, medicine in school toilets.



## Hygiene/Infection Control

Staff should follow basic hygiene procedure. Staff should use protective disposable gloves and take care when dealing with blood or other body fluids, and also with the disposal of dressings and equipment.

## Emergency Procedures

Staff will follow school's normal emergency procedures (for example, calling 999). All pupils' IHPs will be clearly set out what constitutes an emergency and will explain what to do.

If a pupil needs to be taken to hospital, staff will stay with the pupil until the parent arrives, or accompany the pupil to hospital by ambulance.

## Training

Staff who are responsible for supporting pupils with medical needs will receive suitable and sufficient training to do so.

The training will be identified during the development or review of IHPs. Staff who provide support to pupils with medical conditions will be included in meetings where this is discussed.

The relevant healthcare professionals will lead on identifying the type and level of training required and will agree this with the Headteacher (**Nicola Anderson**). Training will be kept up to date.

Training will:

- Be sufficient to ensure that staff are competent and have confidence in their ability to support the pupils;
- Fulfil the requirements in the IHPs;
- Help staff to have an understanding of the specific medical conditions they are being asked to deal with, their implications and preventative measures.

Healthcare professionals will provide confirmation of the proficiency of staff in a medical procedure, or in providing medication.

All staff will receive training so that they are aware of this policy and understand their role in implementing it, for example with preventative and emergency measures so they can recognise and act quickly when a problem occurs. This will be provided for new staff during their induction.



## **Record Keeping**

The Management Committee will ensure that written records are kept of all medicine administered to pupils. Parents will be informed if their child has been unwell at school.

IHPs are kept in a readily accessible place - the school office - which all staff are aware of.

## **Complaints**

Parents/carers with a complaint about their child's medical condition should discuss these directly with the Headteacher in the first instance. If the Headteacher cannot resolve the matter, they will direct parents to make a formal complaint via the school's complaints procedure.

## **Links to other PRU policies**

This policy should also be read alongside and in conjunction with:

- Accessibility Plan
- Complaints Procedure
- Equality, Diversity and Cohesion Policy
- Health & Safety (including First Aid) Policy
- Child Protection and Safeguarding Policy
- SEND Policy and information report
- PSHE Policy
- Anti-Bullying Policy

## **Monitoring and Review**

This policy will be monitored and reviewed by the Headteacher and the Management Committee every 2 years to ensure that it is kept up to date with current guidelines.